

LAWRENCE POWER PLANT

Turning into the plant

When turning into the plant you will take a left.

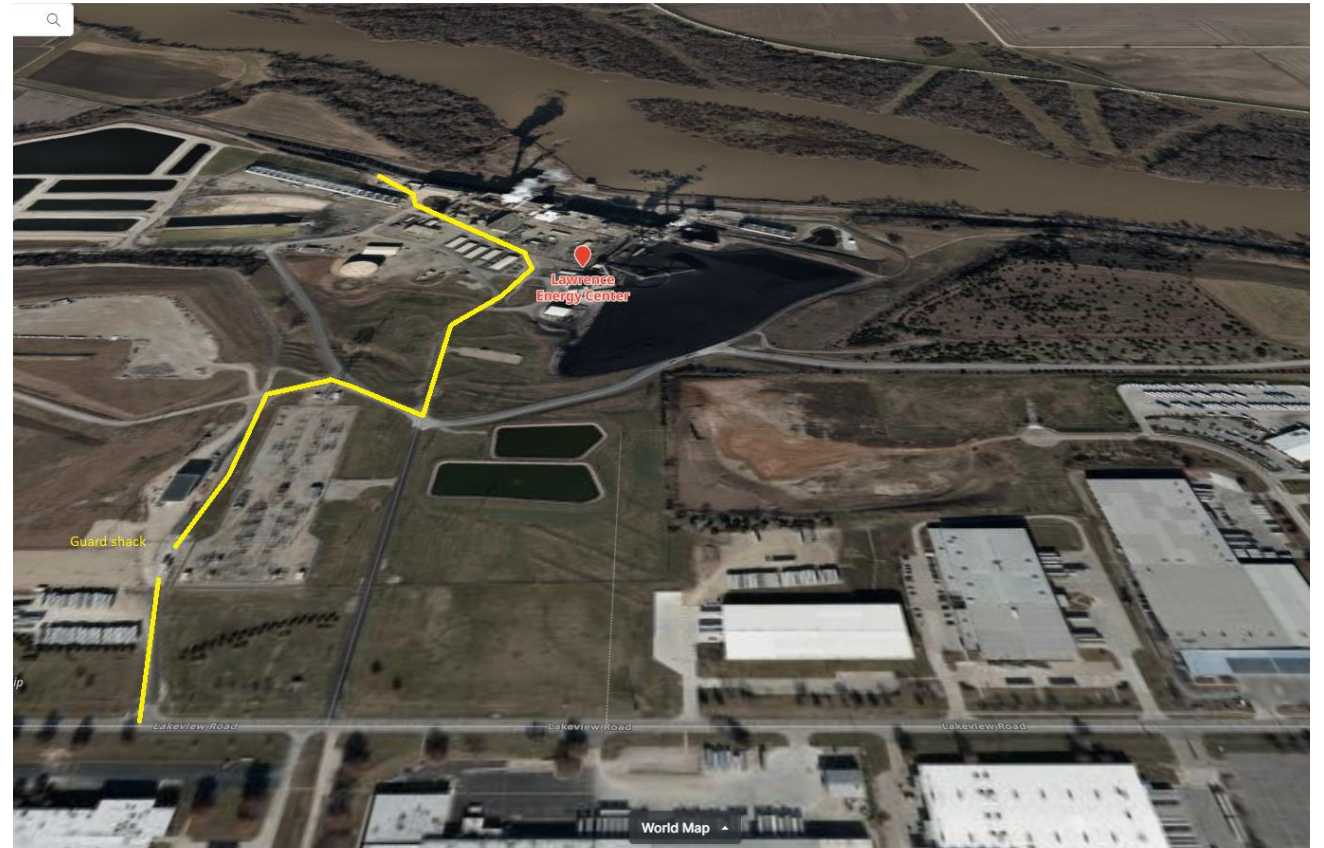
You will see tractor trailers to your left.

You will come up to a guard shack.

Let them know who you are.

Continue straight until it starts to turn right
you'll see a large radio tower on your right

Keep going straight until you come up to a
area where you have to turn left right or
straight. You'll go left.

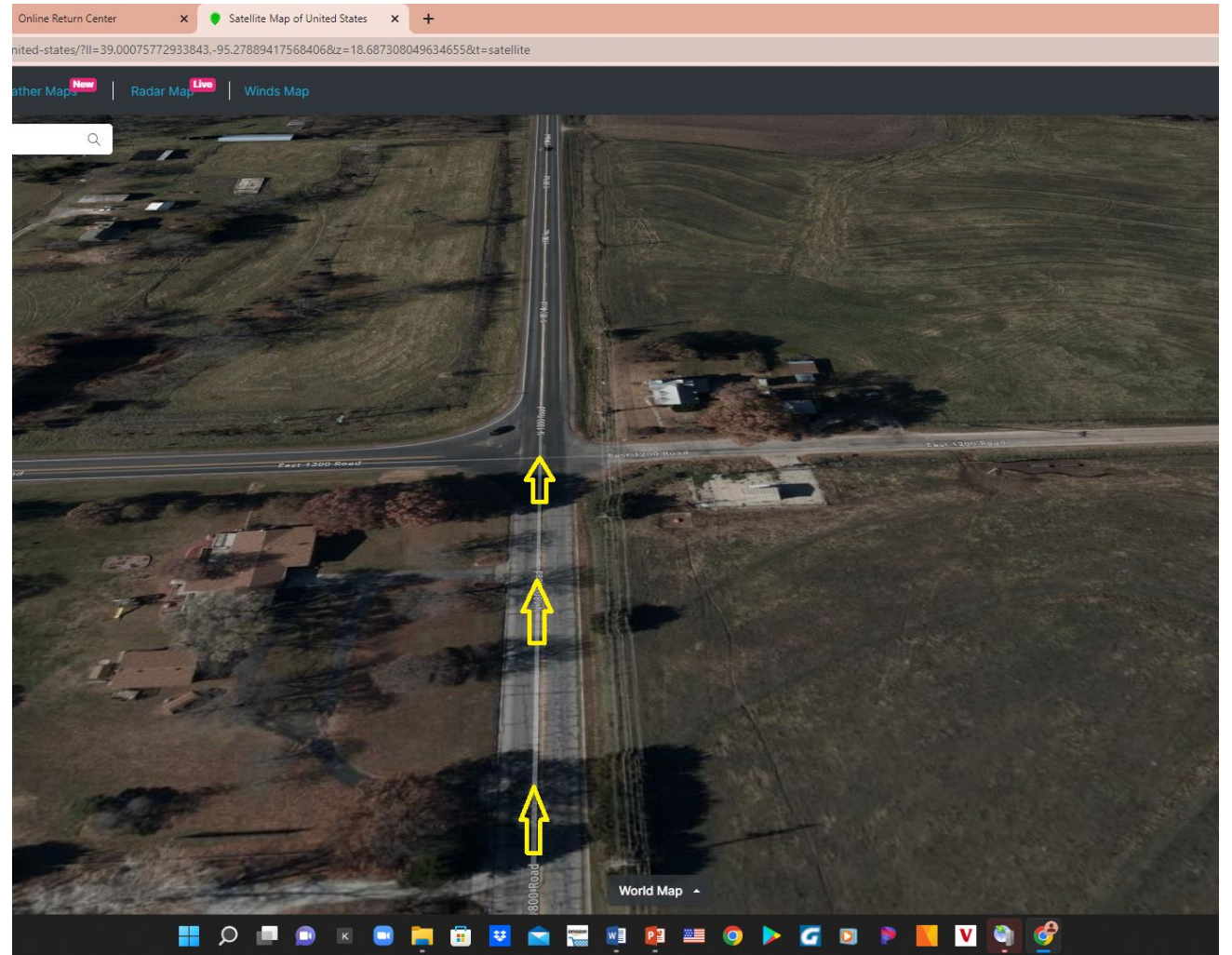


Leaving the plant

Turn right on 1800rd

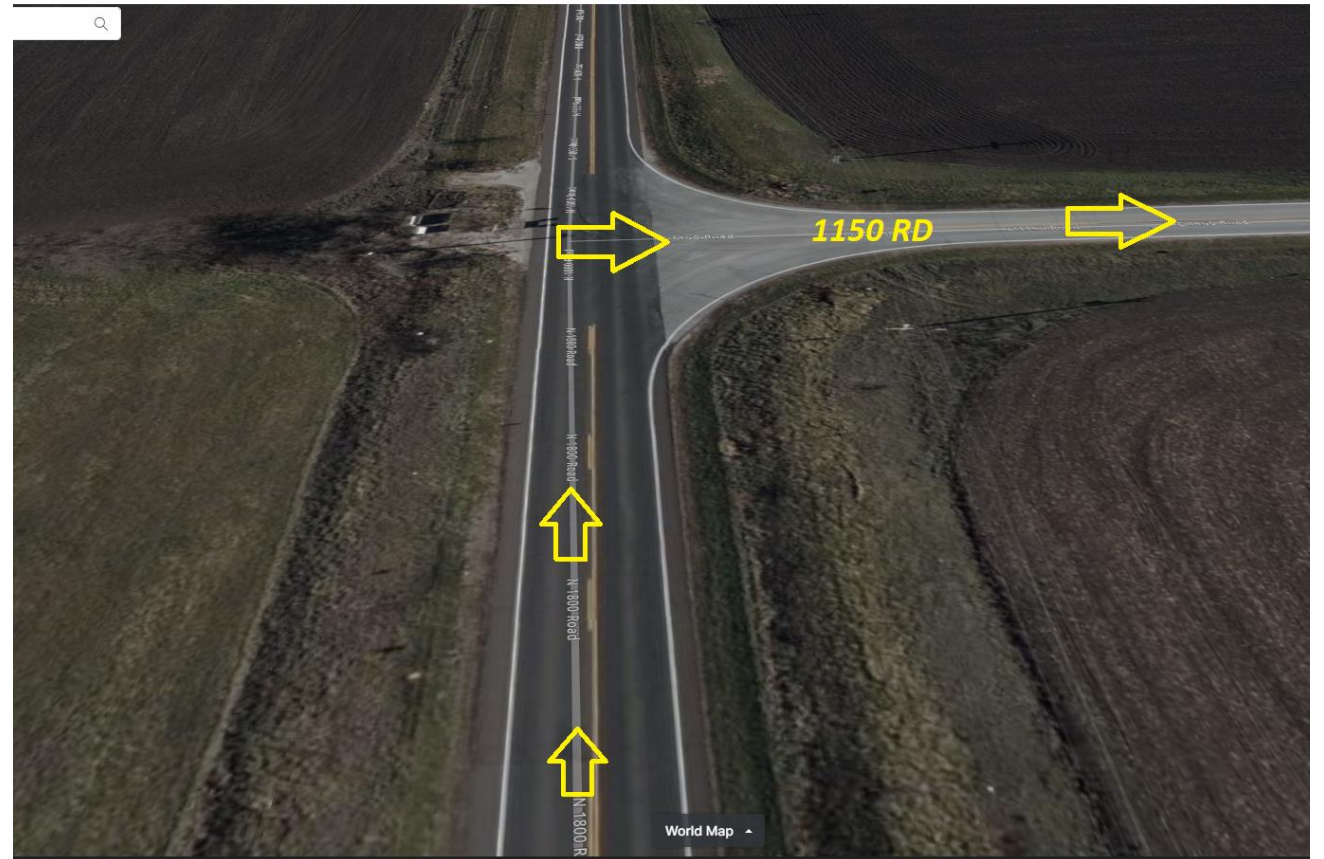


You will pass road 1200



Turn right on 1150Rd

Now you will be coming up to your 2nd intersection after leaving the plant. This is Road 1150. Turn right on 1150 Road.



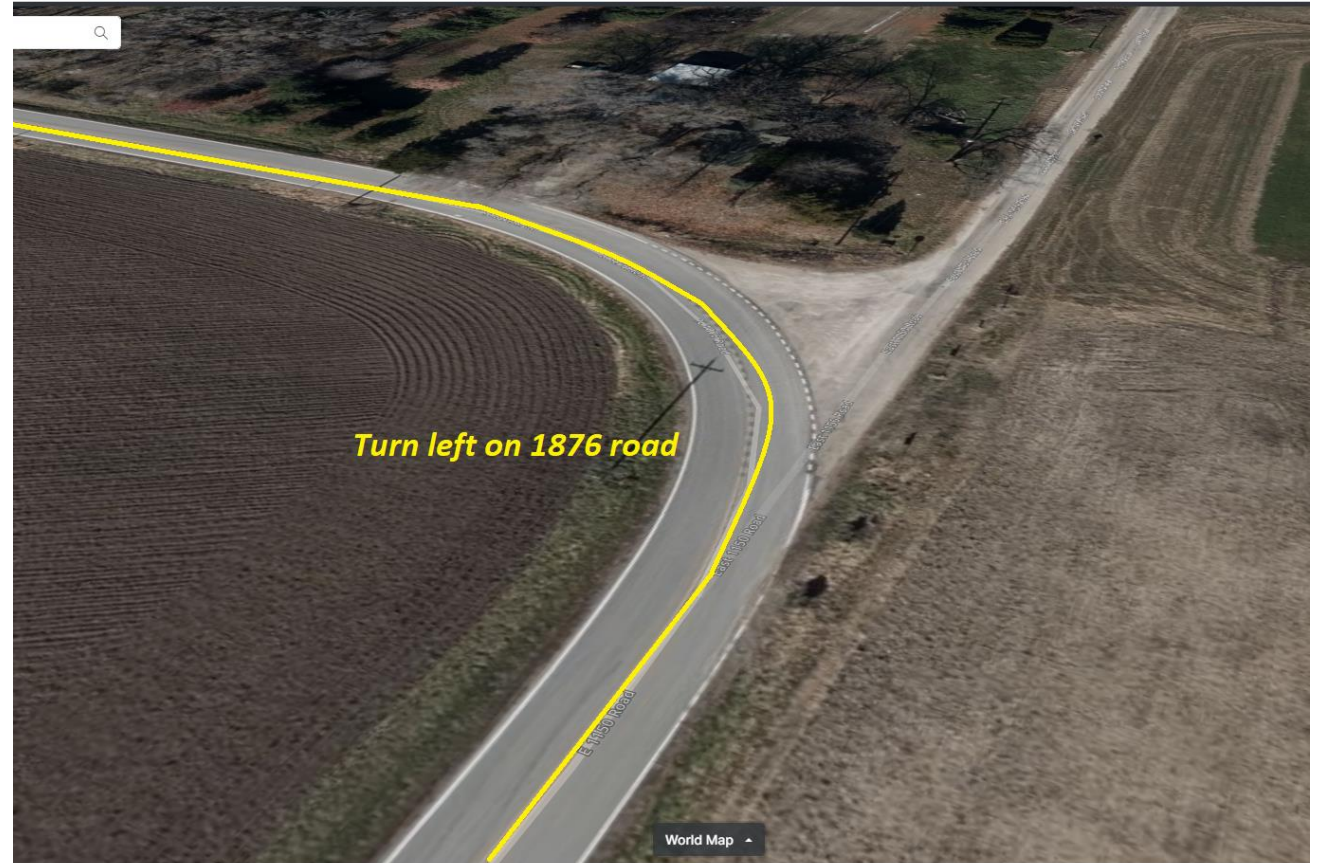
1150Rd

Stay on 1150rd for couple miles



1876rd

Turn left on 1876rd

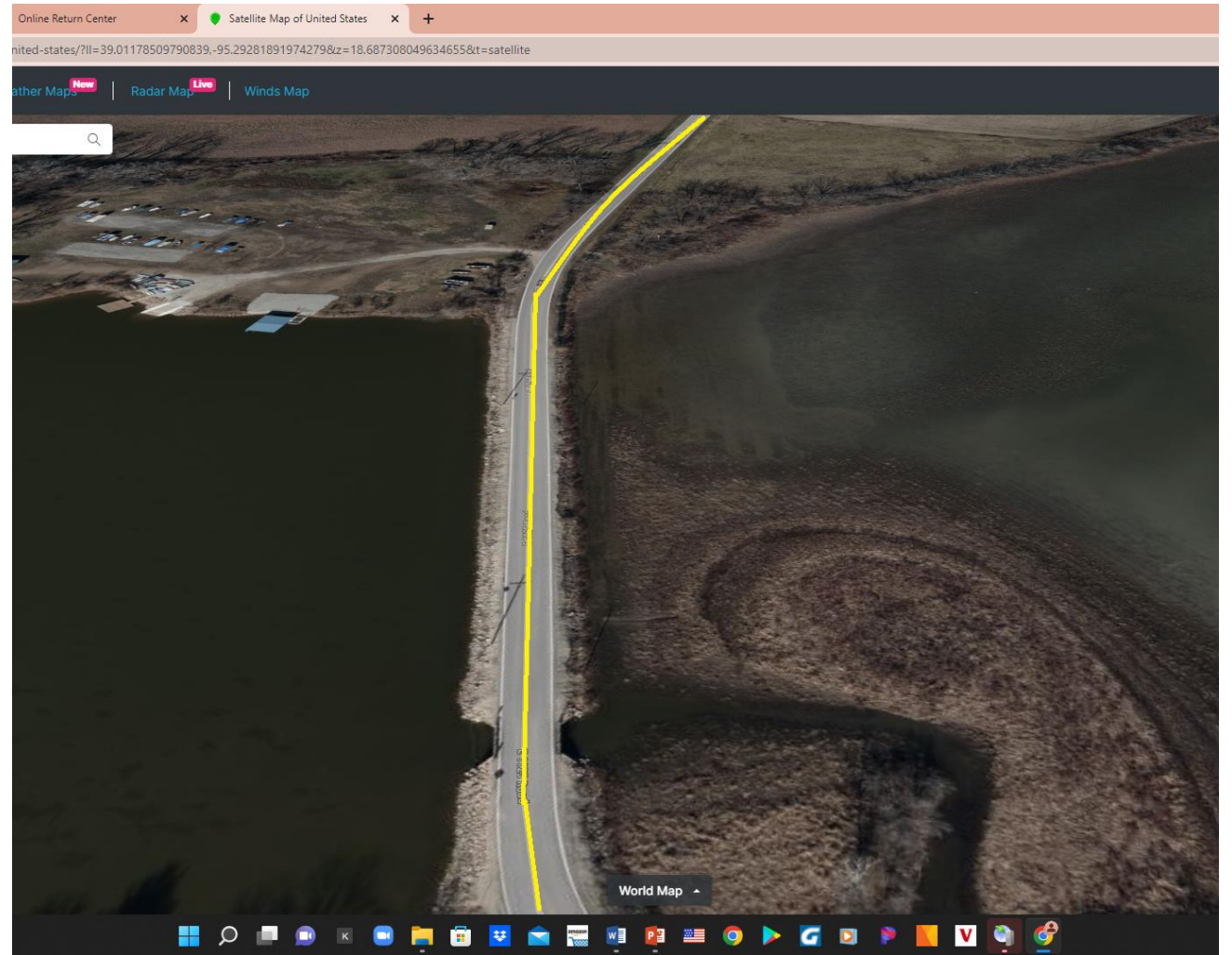


1125rd

Turn right on 1125rd



Continue on for few miles. A lake will be on your left.





TECUMSEH

Brakeman have van driver turn around head south bound.



1876rd

Turn right on 1876rd



1125rd

Turn left on 1125rd



1800rd

Turn right on 1800rd

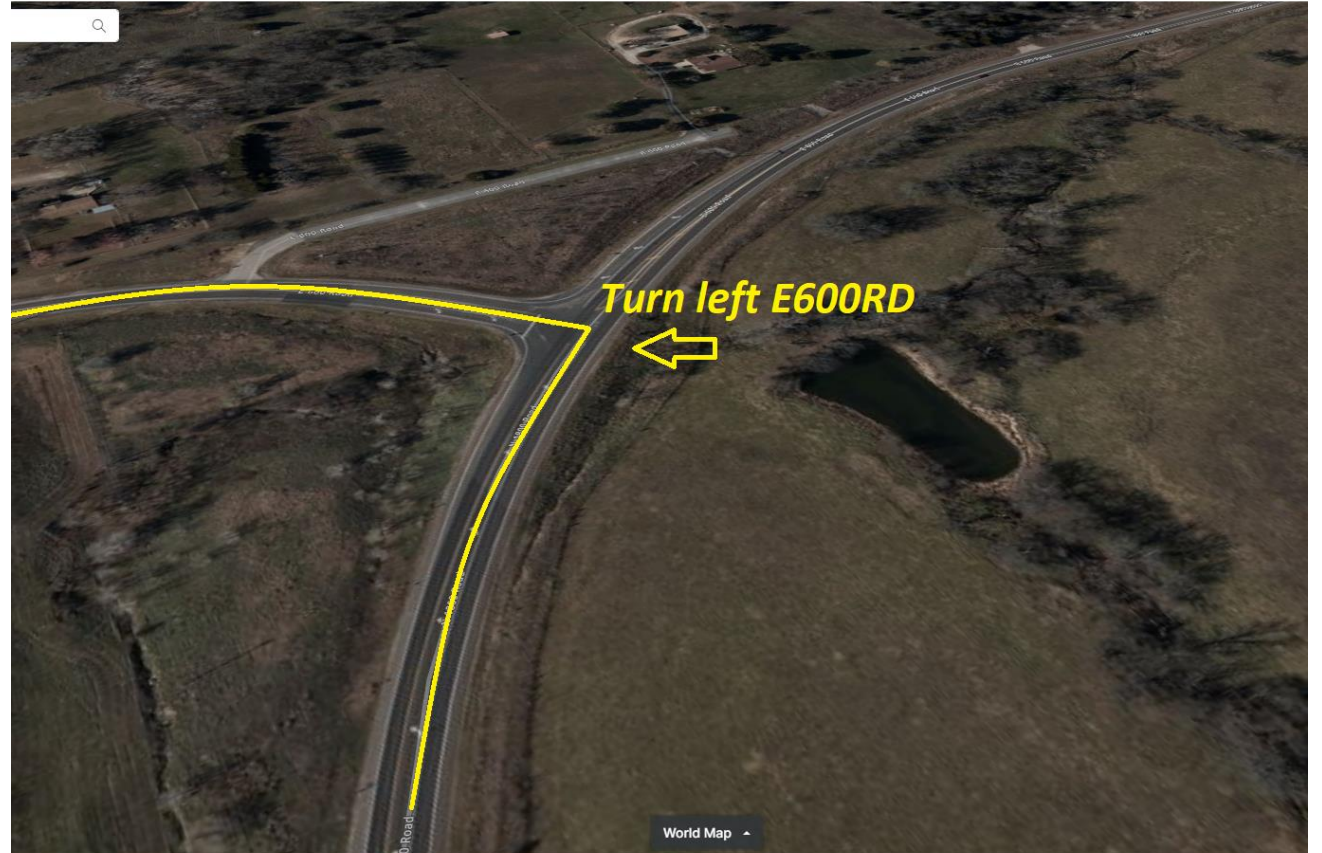


Continue on for several miles



600rd

Turn left E600rd



Go under freeway bridge



Highway 40

Turn right Highway 40



Continue on Highway 40



Go under free way
bridge





Shaden rd

Turn right on shaden rd





Turn right on 2nd street

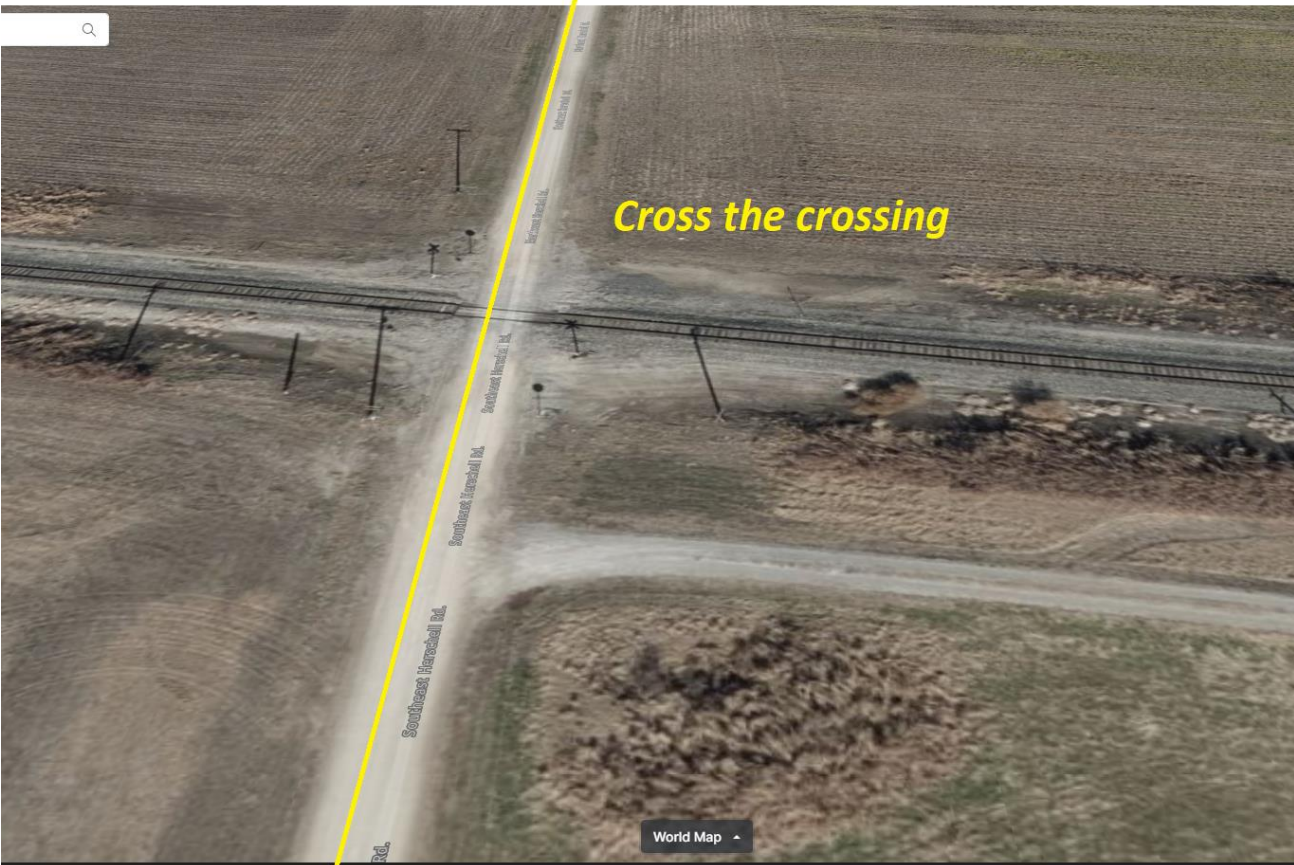




Continue on for few miles

Turn left on Hershul rd





Kriepe rd

Turn left on Kriepe rd





*Turn left into this road
that slightly appears.
you'll drive into a corn
field. The road is rough*

Tecumseh

Arriving East Tecumseh signal

